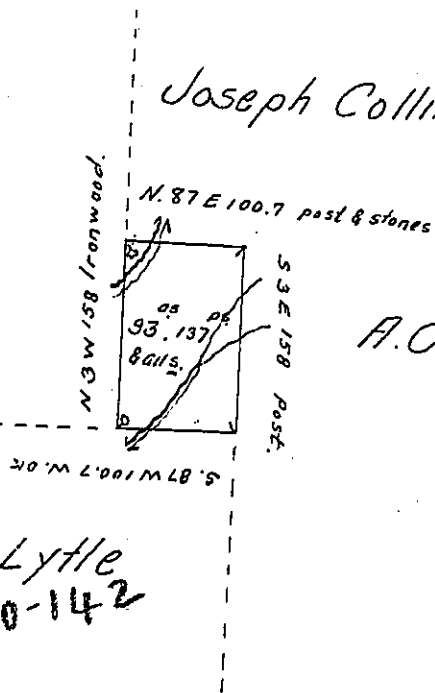


Lytle Painter & Co.

Joseph Collingwood

A.C. Morrison
C166-110

C.E. Lytle
C110-142



Draft of a tract of land Situate in Sandy Creek Township Venango County West of the Allegheny River and on South Sandy Creek. Surveyed July 31st 1863 in pursuance of a warrant granted to C.E. Lytle dated 28th day of July A.D. 1863. and contains as above Ninety three Acres. one hundred & thirty Seven perches & the usual alls. &c.

W^m Hilands

C.S.

Hon. James P. Barr }
Surveyor General }

IN TESTIMONY that the above is a copy of the original remaining on file in the Department of Internal Affairs of Pennsylvania, made conformably to an Act of Assembly approved the 16th day of February, 1833, I have hereunto set my Hand and caused the Seal of said Department to be affixed at Harrisburg, this fourteenth day of September 1905.

Loac B. Brown
Secretary of Internal Affairs.